

Beneteau 393



Make	Model	Length	Price	Year	Condition
Beneteau	393	38 ft 1 in	\$ 117,900	2003	Used
Boat Name	Hull Material	Number of Engines	Fuel Type		
Head Over Keels	Fiberglass	1	Diesel		

Head Over Keels has been well maintained and is outfitted for comfortable cruising in Florida and beyond. This 393 is equipped with: Kato custom dinghy davit system, full cockpit enclosure, 2 AC units each 12,000 BTU with reverse heat, radar, autopilot, Yanmar 56hp with 1572 engine hours, Avon dinghy with a 9.9 Honda outboard Portable generator - Honda 2000 The bottom was done December 2016 with interlux Micron 66. The running rigging and both heads were replaced in 2018. The sanitary hose was replaced in 2017 Lenses, gaskets and hardware on the hatches replaced 2018 Water pump - new 2018 This is a one owner, NEVER CHARTERED, well maintained...

Additional Information and Photos

Measurements

LOA: 39 ft 3 in
LWL: 35 ft 1 in
Beam: 13 ft 1 in
Dry Weight: 17152 lb
Ballast: 5357 lb
Displacement: 17152 lb
Windlass: Electric Windlass
Fuel Tanks Capacity: 35 gal
Fresh Water Tanks Capacity: 131 gal
Number of Cabins: 2
Number of Heads: 2

Propulsion

Engine #1
Engine Make: Yanmar
Engine Model: 4JH3d
Primary Engines: Inboard
Drive Type: Direct Drive
Location: Center
Engine Year: 2003
Hours: 1572
Power: 40 hp

Electronics

Depthsounder
Radar - Garmin 18 HD
Log-Speedometer - Garmin
Wind Speed and Direction
Navigation Center
Plotter - Garmin 4210
Autopilot - Raymarine
Radio
Compass

Additional Information and Photos

GPS
VHF

Sails

Furling Mainsail
Furling Genoa - 135%

Rigging

Steering Wheel

Inside Equipment

Oven
Manual Bilge Pump
Microwave Oven
Air Conditioning
Heating
Hot Water
Refrigerator
Deep Freezer
Battery Charger

Electrical Equipment

Shore Power Inlet

Outside Equipment/Extras

Cockpit Shower
Davit(s) Cockpit
Table Swimming
Ladder

Covers

Bimini Top
Spray Hood

Sail Area

IJPE : 636.00 sq ft
I : 46.08 ft
J : 14.50 ft

Additional Information and Photos

P : 40.00 ft

E : 15.08 ft

Working Sail Area : 636.00 sq ft

Manufacturer Provided Description

Based on the highly successful Beneteau 473 and designed by renowned naval architects Berret / Racoupeau Yacht Design, the Beneteau 393 is a unique 39-foot passagemaker that answers the long awaited quest for a serious bluewater cruiser. Roomier, more spacious, and boasting some of the best accommodations to be found, the 393 will be sure to please the most scrupulous of sailors.

Disclaimer

The Company offers the details of this vessel in good faith but cannot guarantee or warrant the accuracy of this information nor warrant the condition of the vessel. A buyer should instruct his agents, or his surveyors, to investigate such details as the buyer desires validated. This vessel is offered subject to prior sale, price change, or withdrawal without notice.

Additional Information and Photos



2 CABIN PLAN

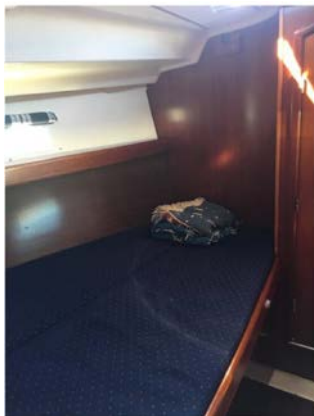
Manufacturer Provided Image: 393



Additional Information and Photos



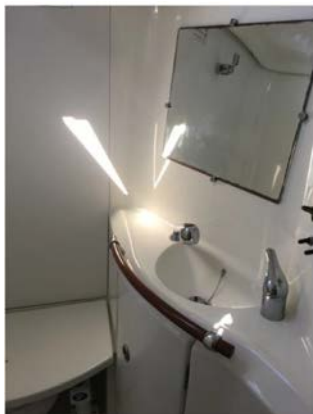
Additional Information and Photos



Additional Information and Photos



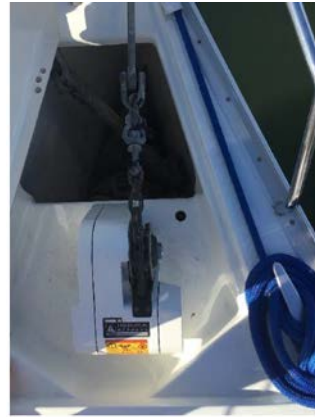
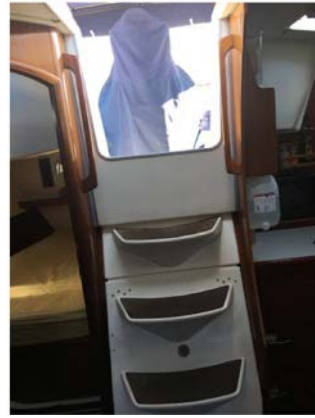
Additional Information and Photos



Additional Information and Photos



Additional Information and Photos



Additional Information and Photos

