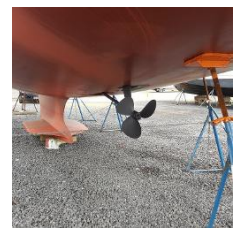
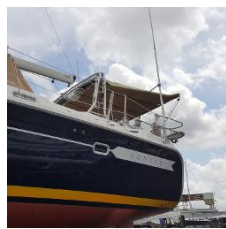
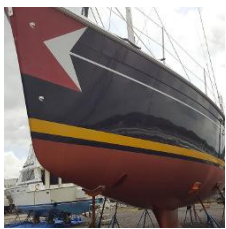


# Hunter 49



Make	Model	Length	Price	Year	Condition
Hunter	49	49 ft 1 in	\$ 239,000	2007	Used
Boat Name	Hull Material	Draft	Number of Engines	Fuel Type	
Liberty	Fiberglass	5 ft 6 in	1	Diesel	

Owner has new boat...Price reduced to \$239,000! This beautiful Hunter 49 is in excellent condition with her easily handled sail configuration, including self tacking stay sail, all roller furling she is perfect for a couple to handle. Complete amenities for entertaining, dining, or full time living aboard. Brand new mast and standing rigging, February 2018. Freshly painted bottom, algrip painted hull "Mike Harker" style. This boat can be configured to cruise around the harbor or around the world in comfort. Dual helm stations provide outstanding visibility allows for a full, unobstructed cockpit forward of the helm and SSB Radio. Hunters trad...

## Additional Information and Photos

### Measurements

LOA: 49 ft 11 in  
LWL: 43 ft 10 in  
Beam: 14 ft 9 in  
Max Bridge Clearance: 63 ft  
Max Draft: 5 ft 6 in  
Cabin Headroom: 6 ft 9 in  
Dry Weight: 32813 lb  
Ballast: 12544 lb  
Displacement: 32813 lb  
Displacement Type: Dry Load  
Windlass: Electric Windlass  
Electrical Circuit: 110V  
Fuel Tanks Capacity: 150 gal  
Fresh Water Tanks Capacity: 200 gal  
Holding Tank Capacity: 52 gal  
Number of single berths: 6  
Number of double berths: 4  
Number of Cabins: 3  
Number of Heads: 2

### Propulsion

Engine #1  
Engine Make: Yanmar  
Primary Engines: Inboard  
Engine Year: 2007  
Hours: 200  
Power: 100 hp Propeller  
Type: 3 Blade Propeller  
Material: Bronze

### Electronics

Depthsounder  
Radar - Garmin 3210

## Additional Information and Photos

Log-Speedometer  
Wind Speed and Direction - Raymarine Wind Machine ST 60  
Repeater(s) - Yes, @ Nav Station  
TV Set  
Navigation Center  
Plotter - Garmin 3206, 3210  
DVD Player  
Autopilot - Raymarine ST 7001+ Autopilot + Wireless Remote  
Radio  
Compass  
CD Player  
GPS - Garmin  
Cockpit Speakers  
VHF - With Remote @ Helm

### Sails

Furling Mainsail  
Genoa  
Furling Genoa - and Staysail

### Rigging

Steering Wheel - Two  
Electric Winch - Two: Starboard and Port Cabin Top

### Inside Equipment

Bow Thruster  
Electric Bilge Pump  
Oven  
Manual Bilge Pump  
Microwave Oven  
Marine Head  
Air Conditioning - Three Units  
Electric Head  
Heating Hot  
Water  
Refrigerator  
Deep Freezer - 2; one can be dialed in to be used for a freezer or refrigerator

## Additional Information and Photos

Sea Water Pump  
Battery Charger

### Electrical Equipment

Shore Power Inlet  
Generator - Fischer Panda 12KW  
Inverter

### Outside Equipment/Extras

Cockpit Shower  
Outboard Engine Brackets  
Davit(s)  
Cockpit Cushions  
Cockpit Table  
Swimming Ladder

### Covers

Bimini Top  
Spray Hood  
Genoa Cover

### Sail Area

I : 54.58 ft  
J : 16.50 ft  
P : 50.58 ft  
E : 21.83 ft  
Working Sail Area : 1277.00 sq ft

### Keel Details

Keel #1  
Keel Type: Fin  
Ballast: 11216 lb  
Max Draft: 7.00 ft

### Manufacturer Provided Description

## Additional Information and Photos

A luxurious passagemaker with a versatile floor plan for total extended offshore cruising, the Hunter 49 offers a complete range of live aboard accommodations and outstanding entertainment features. With an overall length of 49 feet 11 inches, plus a 14 feet 5 inch beam and 6 feet 9 inches of salon headroom, the Hunter 49 is a BIG boat with impressive interior volume. Driving the Hunter 49's new hull is a specially engineered sail plan that achieves maximum efficiency while maintaining the Hunter trademark of single-handed sail-ability, which is a great feature for a boat of this size. Components aboard the Hunter 49 include Hunter's famous mainsheet traveler arch, backstayless B & R rig, a battened full roach main sail, and two headsail options: single self-tacking jib or self-tacking staysail with overlapping jib. A dual-ended mainsheet allows adjustments from both the cockpit and companionway, and all sheets and halyards end at the cockpit.

### Optional Rigging

Furling w/Vertical Battens:  
1,161 sq ft / 107.86 sq m

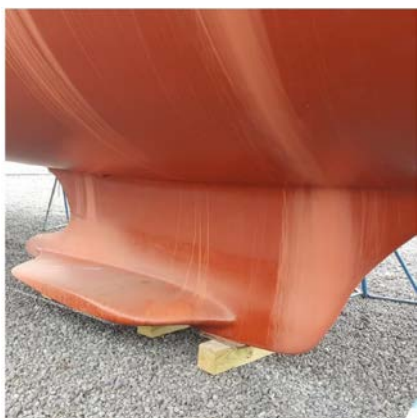
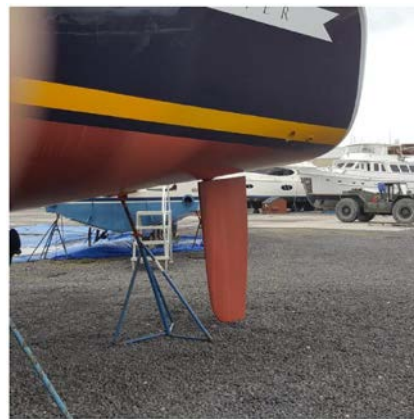
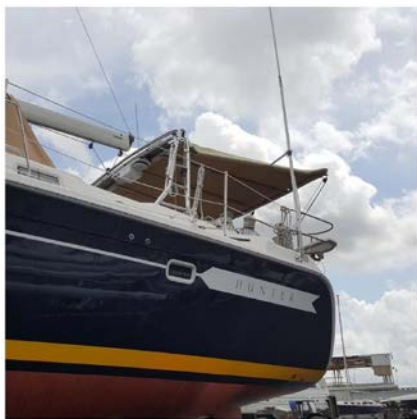
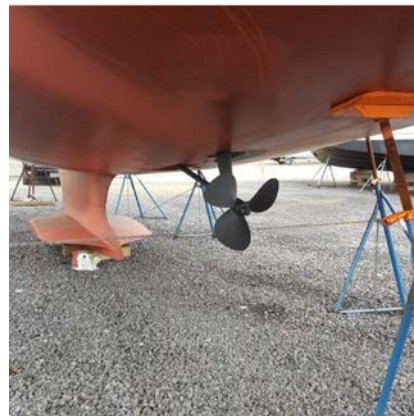
Cutter Rig:  
1,316 sq ft / 122.26 sq m

Added Sail Area w/Tall Rig, Furling Option:  
97 sq ft / 9.01 sq m  
Added Sail Area w/110% Overlapping Jib Option:  
77 sq ft / 7.15 sq m

### Disclaimer

The Company offers the details of this vessel in good faith but cannot guarantee or warrant the accuracy of this information nor warrant the condition of the vessel. A buyer should instruct his agents, or his surveyors, to investigate such details as the buyer desires validated. This vessel is offered subject to prior sale, price change, or withdrawal without notice.

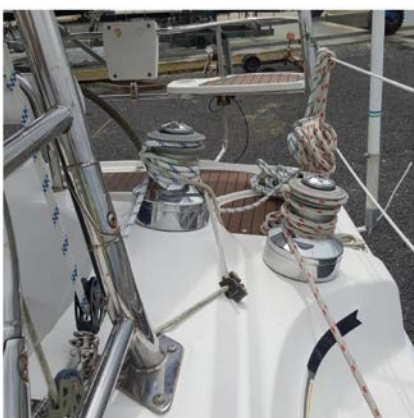
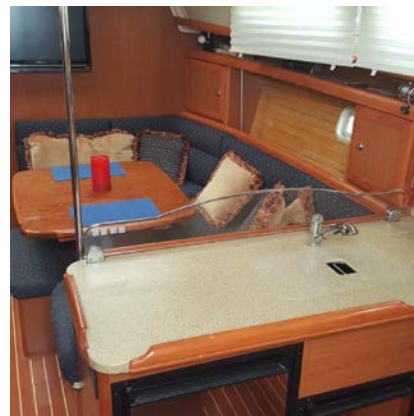
## Additional Information and Photos



## Additional Information and Photos

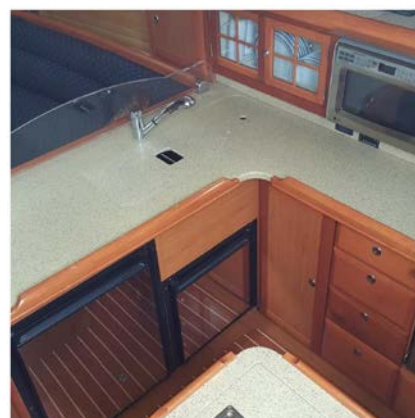


## Additional Information and Photos

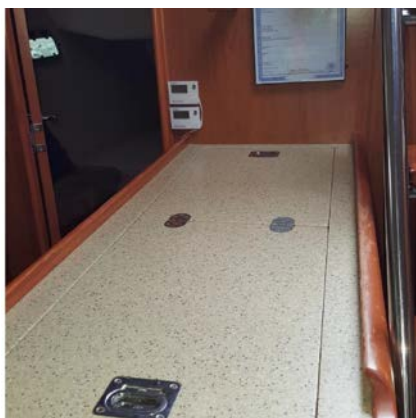




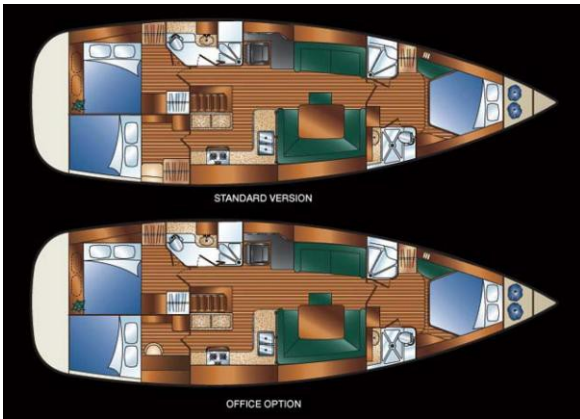
## Additional Information and Photos



## Additional Information and Photos



## Additional Information and Photos



Manufacturer Provided Image

